



GOBUDS 902

True Wireless Earbuds

Get ready for MORE, for a LIFE of WOW with your all new GOBUDS 902. We strongly recommend you go through this manual entirely before beginning to use the product, as it contains important technical information to ensure a seamless audio experience. It can also be referred to in times of difficulty.

PACKAGE CONTENTS

- 1 x GOBUDS 902
- 1 x Type C Charging Cable
- 1 x Warranty Card
- 1x Charging Case
- 1 x Manual
- 2x Additional Pairs of Ear Muffs



CHARGING

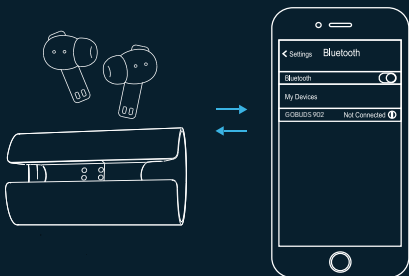
- 1 Remove the transparent protection film before using for first time.
- 2 Earbuds are partially charged. Please ensure you fully charge them before you use them for the first time.
- 3 Charging will start automatically, and the LED indicator will turn blue.
- 4 The earbuds are fully charged, when the LED indicator turns blue for 60s and then turns off.

Note: Charge the earphones at least once a month, when they are not in use for a long time.

PAIRING DEVICE

Pairing steps for mobile :

- After sliding them out of the case, the earbuds are automatically turned on and paired with each other.
- Open the list of the available bluetooth devices on your device and select the option of GOBUDS 902 , while keeping the earbuds close to your mobile.
- The earbuds' indicator will flash blue indicating a successful connection.
- GOBUDS 902 will automatically be connected to the previously paired device every time you remove them from the charging case.



HOW TO USE

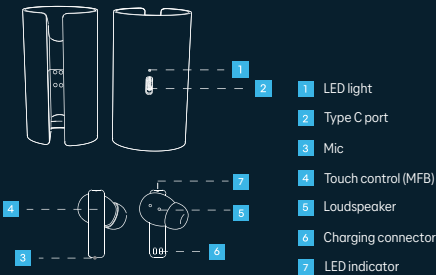
Power On	Touch and hold the left or right MFB for 2 seconds
Power Off	Touch and hold the left or right MFB for 5 seconds
Answer call	Tap the left or right MFB twice
End call	Tap the left or right MFB twice
Music play/pause	Tap the left or right MFB once
Previous song	Tap the left MFB twice
Next song	Tap the right MFB twice
Volume up	Touch and hold the right MFB for 2 seconds
Volume down	Touch and hold the left MFB for 2 seconds
Voice assistant	Tap the right MFB 3 times to activate Voice assistant
Game mode On/off	Tap the left MFB 3 times to (de)activate Game mode

RESET :

- Choose "forget the GOBUDS 902" on your device's bluetooth list.
- Take the two earbuds out of the charging case. Touch and hold the MFB for 5 seconds to power them off.
- Touch and hold the MFB on the earbuds for 8 seconds until the red and blue lights flash rapidly, then tap 5 times to reset.
- The earbuds have been reset to their default settings.

SPECIFICATION

Model	GOBUDS 902
Drivers	10mm Titanium
Frequency Range	20Hz-20kHz
Sensitivity	110dB±5dB
ENC	Environmental noise cancellation
Case Battery Capacity	300mAh
Earbuds Battery Capacity	35mAh
Total Playtime	24 Hours
Earbuds Playtime	6 Hours
Fast Charge	120 mins playtime with 10 mins charge
Earbuds Charging time	50 minutes
Case Charging time	2 Hours
Charging Port	Type C
Input Voltage	5VDC, 1A
Water Resistance	IPX4
Bluetooth	V5.3
Transmission Dist.	10m



MONO MODE

After pairing with the device successfully you can choose to use either of the two earbuds in mono mode.

SAFETY INSTRUCTIONS

- Please read, follow and keep these instructions.
Heed all warnings on the product and in the instructions for use.
- Stop using this product immediately if it causes discomfort or pain. When using this product, it is recommended that you limit the volume to help avoid causing harm to your ears and danger resulting from being unable to hear what is going on around you.
- Keep the device out of extreme heat and humidity.
Do not use the device near water, such as sinks, bathtubs, swimming pools, washing machines, tubs of water, etc.
- Observe all signs and instructions that require an electrical device or radio product to be switched off in designated areas, such as petrol/refueling stations, hospitals, blasting areas, potentially explosive atmospheres, and aircraft.
- Using earphones while driving can distract you and increase the likelihood of an accident. If driving conditions demand it (such as bad weather, high traffic density, presence of children in the car, difficult road conditions), pull off the road and park before making or answering calls.
- Battery life may differ depending on personal habits.
- Please do not rotate the headset when the head band has been set/pushed to the lowest position.
- This appliance should be used in moderate climates.

WARNING

- To prevent potential hearing damage, do not listen to high volume levels for long periods.
- Do not turn the volume up too high; doctors warn against prolonged exposure to high volumes.
- Stop using the product or lower the volume if you feel your ears ringing.
Prolonged listening at high volumes could lead to hearing damage.

Life's too short for "ok". Too short to have stuff in our lives that's "ok, I guess".
"But-I'm-almost home!" battery life. "But-it-only-fell-off-the-table" build quality. "Has-someone-stolen-the-bass?" sound quality.
We say NO to "ok". In 2021, we set out to make stuff that's better in little ways that make a big difference.
Stuff for people who expect more. Who want the songs to keep playing until they're home. Who are on a mission to stay up all night. Who want to know they'll feel great and look awesome, every day.
For people who want every day to be a "WoW" day.